

Reasy **Low-Code**
Application Development Platform:
Develop Enterprise Applications Faster



REASY

www.reasyapps.com

Enterprise Application Development Challenges

Developing an Enterprise Application is a meticulous task and it requires precision, vision, and expertise. And when it comes to developing a sophisticated enterprise-scale application, every business struggles with the following challenges:



Changing business requirements and environments



Evolving technology



Interoperability



Multi-device approach



Application security



Dealing with big data



User interface and experience



Low ROI



High TCO and Change Management costs



Maintainability



Go to market Business pressure



Scalability

```
function validateForm() {
  var x = document.forms["myForm"]["fname"].value;
  if (x == "") {
    alert("Name must be filled out");
    return false;
  }
}

<form name="myForm" action="/action_page.php" onsubmit="return validateForm()" method="post">
Name: <input type="text" name="fname">
<input type="submit" value="Submit">
</form>
```

REASY

The Low-code Powerhouse

Reasy, the state-of-the-art low-code application development platform not only helps address all the aforesaid challenges pertaining to application development but also enables the enterprises to increase development productivity, decrease personnel costs, and decrease application operations' cost, and reduce reliance on traditional programming.

The low-code approach of Reasy enables the development and delivery of applications faster and that too, by the stakeholders with little or no coding experience-who are also known as citizen developers.

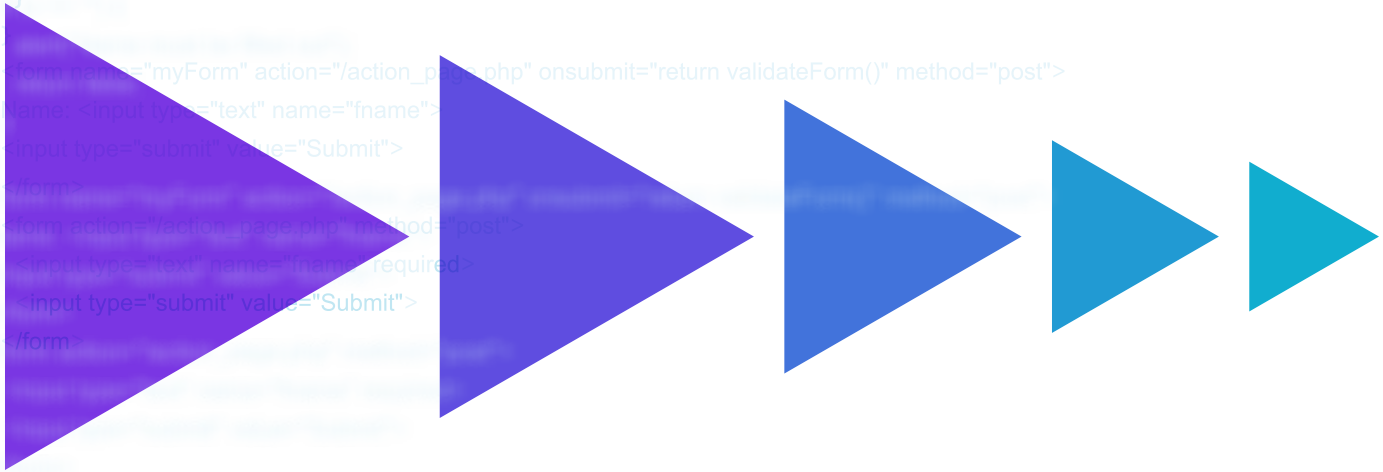
Rather than writing thousands of lines of complex code, the drag-and-drop graphical interface and tools enable business users to create enterprise-scale applications visually and deploy the solutions at lightning-fast speed to quickly adapt to changing business needs.

Reasy enables enterprises to increase productivity by 500%, decrease time to market by 80%, reduce IT costs by 70%, and significantly reduce communication gaps between business and IT.

```
function validateForm() {
  var x = document.forms["myForm"]["fname"].value;
  if (x == "") {
    alert("Name must be filled out");
    return false;
  }
}

<form name="myForm" action="/action_page.php" onsubmit="return validateForm()" method="post">
Name: <input type="text" name="fname">
<input type="submit" value="Submit">
</form>

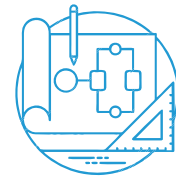
<form action="/action_page.php" method="post">
<input type="text" name="fname" required="">
<input type="submit" value="Submit">
</form>
```



The Features

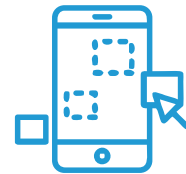
Visual Model-based Development

All methods and processes are presented visually in Reasy platform. This means that you can create your own application in the form of a flow chart for understanding it in a better way. This makes creating applications easier with visual models and methods.



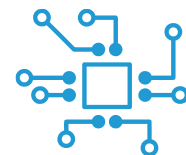
Drag-and-Drop Interface

Drag-and-drop features to create applications make the whole process of application development simpler and easier. Not only does it eliminate the requirement of professional help, but it also saves time by completely terminating the need for typing long codes, thus making low code development user friendly.



Intelligent Automation

Reasy comes with the power of intelligent automation Business Process Management (BPM) to organize & coordinate users, tasks, systems, rules management (BRM), and bots (RPA) based on the business needs at a given point in time. It also enables integration of various systems operated in the organization, which inhibits duplication of data and users need to work only on one integrated platform.



Configurable Integration

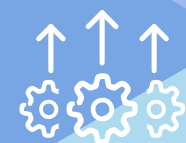
With fast-changing technologies and evolving business dynamics, existing integration methods are no longer as effective. To survive and thrive in this evolving ecosystem, enterprises must have the ability to extend and accommodate new integration solutions that support new use cases.

Reasy comes with a compelling MWaaS offering with the ability to support all the enterprise-scale hybrid integration opportunities. This future-ready, multi-purpose platform provides an array of hybrid integration capabilities, including cloud integration, rapid API creation/composition and management, mobile application/back-end, and IoT integration.



Increased Operational Efficiency with BPMN 2.0

BPMN 2.0 based technology of Reasy enables enterprises to support business process modeling to capture business processes as workflow specifications, business process reengineering to optimize specified processes, and workflow automation to generate workflow implementations from workflow specifications including human interface points.



Microservices for Reusability, Agility and Cohesion

In order to achieve sustainable growth and stay ahead of the competition, enterprises require faster software delivery. Reasy, built on Microservices architecture, empowers enterprises with agility, composability, comprehensibility, easy and independent deployability, resulting in greater efficiency, Better runtime scalability, stronger resilience, and higher availability for better customer experience.

Reasy works with development methodologies like continuous integration and delivery, and DevOps that improve processes for IT teams.

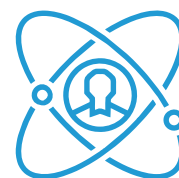
Reasy helps create endpoints that are loosely coupled and highly cohesive. These services are conditioned in such ways that enable businesses to follow the best practices while building the solution. Moreover, these services can be leveraged as an asset to reuse in multiple scenarios.

Reasy comes with pre-configured modules and functionalities that can be reused for almost all kinds of enterprise-scale applications. This allows users to use pre-built assets to create new applications quicker and more efficiently.



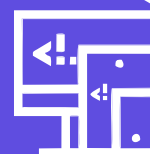
Experimentation and a/b testing

Businesses need to disrupt the market with new business models that deliver value to their customers in a better way. Reasy allows experimenting and building different business models for different scenarios and hypotheses. It is a play area where different business teams can collaborate and try out different prototypes in a small way and innovate a new business model.



Cross-Platform Functionality

With Reasy, you do not have to put in extra effort to optimize your application for platform compatibility. Applications developed in Reasy come with the feature of multiplatform accessibility to reduce unnecessary hassle, hence saving your resources and time.



Meets security standards

Reasy platform has been built on the privacy-by-design principle. This means this is not only a highly secure application development platform, but it also ensures the utmost security and safety of the application built on the platform.



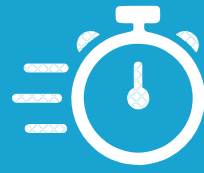
Scalability

Reasy is an enterprise-grade platform designed with a focus on scalability. The architecture allows scalability, supporting even the most massive of customer requirements.



Declarative Tools

Declarative tools of the platform, such as visual models and business rules allow users to modify and change their applications without professional assistance and coding. With this power-packed platform, you can change or add things to your application on your own. This makes app development easier and faster. These codes also allow debugging, assessment, and correction of applications to ensure flawless user experience.



Data Virtualization

Built-in data connectors, adapters, coordinators, and translators are required to combine new and existing data sources effortlessly.

The data virtualization capability of Reasy ensures business continuity in a hybrid model in the lifecycle of complete digitization.



Key Capabilities

Reasy comes with all the high-end capabilities and endless possibilities that make your job of developing enterprise applications easier, faster, and smoother.



Intelligent Delivery



Modular Architecture



Agile Change Management



DevOps Collaboration



D.I.Y Enterprise apps



Reusable assets



Experimentation



Automated Testing

The Reasy Edge

Although there are a number of low-code platforms and the number is rising, Reasy holds its position strong. This is an emerging platform but has already proven its class, power, and resilience in multiple engagements in the likes of Government, BFSI, and Telecom.

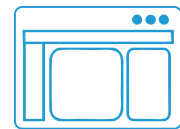
100% Branding Guidelines Compliance

Reasy is the only low-code platform that enables you to import your branding guidelines and existing HTMLs while developing enterprise applications. This means you can build apps perfectly aligned with your marketing guidelines, ensuring seamless and consistent experience for your customers.



Future proofing your apps with Micro Frontends

We've extended our micro services architecture to micro frontends giving you the flexibility to upgrade your frontend at your own pace without disturbing your customer's experience.



Tech Superiority

We know how rapidly technology is evolving and everything at our end is granular and basic so you can enjoy the flexibility at your end. Angular/ React/ No SQL/ SQL, whatever your tech needs are, Reasy can support it.



Collaboration at its best

Reasy is modular to the T. All modules within the platform such as Screens, Data Modeler, API Engine, Workflow etc. can be configured simultaneously. This architecture gives your business, design, and various IT teams the ability to collaborate smoothly simultaneously.



Co-Creation

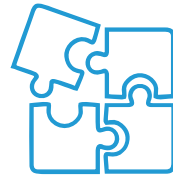
At Reasy, you have a say with our teams and immediate roadmap.

We are strongly invested in empowering you and creating value together. We provide you with all the necessary assistance so that your team can come up with outstanding solutions to make your business perform better and drive more revenue.



Reasy fits seamlessly into your Tech puzzle

Reasy, built on the OSGi framework, enables enterprises to use and sell each module separately. You are not forced to use the entire platform to develop applications if you already have a module available in your enterprise. Integrated it with the platform, and you're ready to go.



20 Years of Data Management Experience Packed In

Reasy has over two decades of strong data management experience and 100s of adaptors to popular enterprise systems, ranging from legacy mainframes to the latest billing systems, CRMs, ERPs etc. Whether you're a small business or an MNC, if you want to develop applications faster, reduce cost and time to market, and enjoy all the advantages of advanced technologies, it's time to embrace Reasy low-code application platform.



REASY
Making tech relatable